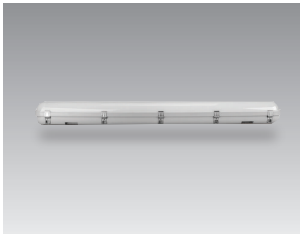
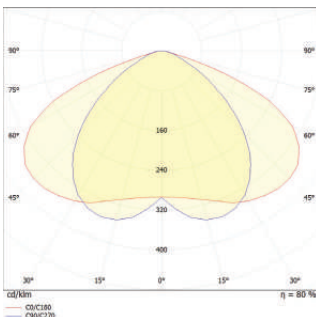


Geroluxe Code

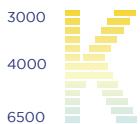
ZO-WP0065



Photometrics



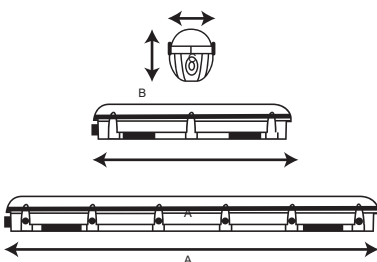
Color Temp.



Beam Angle



Technical Drawing



Technical Specifications

Reflector Type: Reflector Luminous flux

A650 x B97 x C82mm	20W	3000lm
A1220 x B97 x C82mm	36W	5400lm
A1220 x B97 x C82mm	40W	6000lm
A1220 x B97 x C82mm	50W	7500lm
A1560 x B97 x C82mm	60W	9000lm
A1560 x B97 x C82mm	70W	10500lm

Description:

- Housing: Injection Moulded, in Grey Polycarbonate, Vandal Resistant, UV Stabilized, High Mechanical Resistance due to the Frame Reinforced by Internal Ribbing.
- Diffuser: Injected Moulded in Polycarbonate with Internal Ribbing for Greater Lighting Control, in V2 self-extinguishing, UV-stabilised Material, Equipped with Stainless Steel Screw Clamping.
- Color Available: Grey
- Lifespan: >50,000 Hours (L80 B10)
- Reflector: Aluminum Reflector
- Voltage: AC200-240V
- Working Temperature: -20C° ~ +65C°
- UGR <20
- Luminous Efficacy (lm/W): 150
- MacAdam <3

